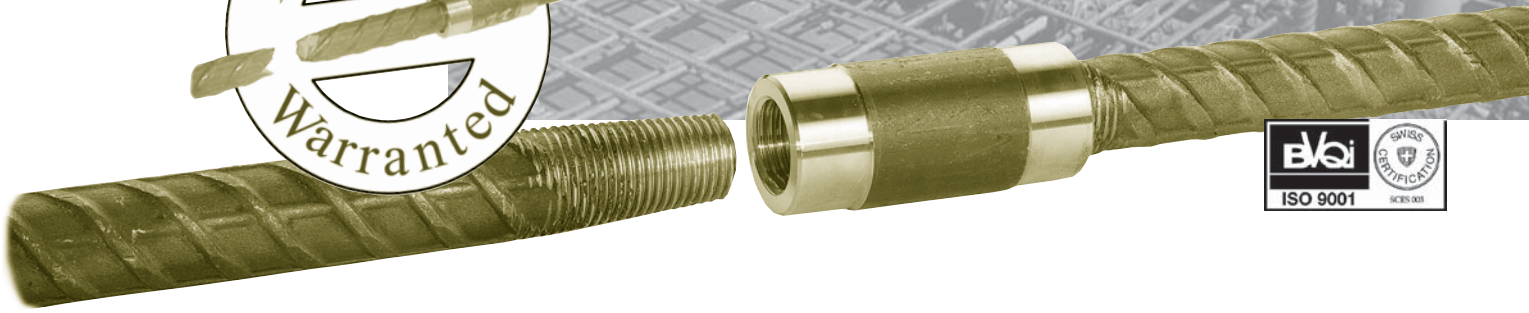
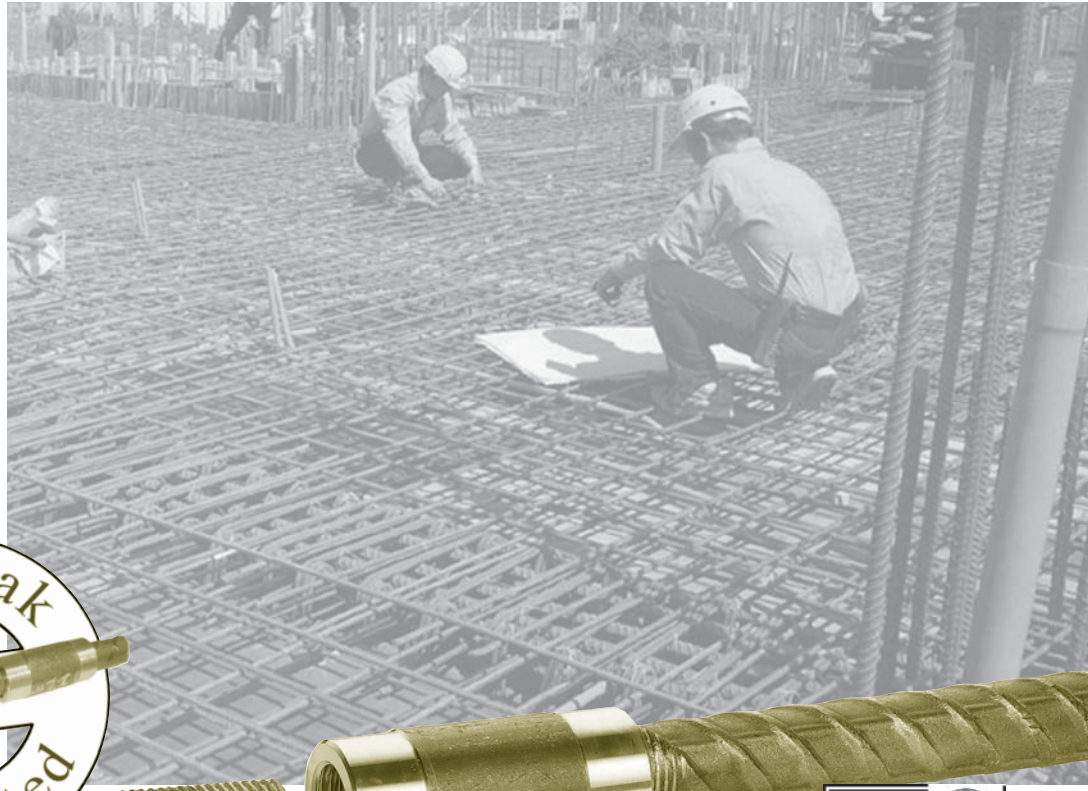


# Baron<sup>®</sup>-BB

## Mechanical-Rebar-Splicing-System



# ancotech

Special Reinforcement - Stainless Steel



## The BARON® - BB Coupler-System

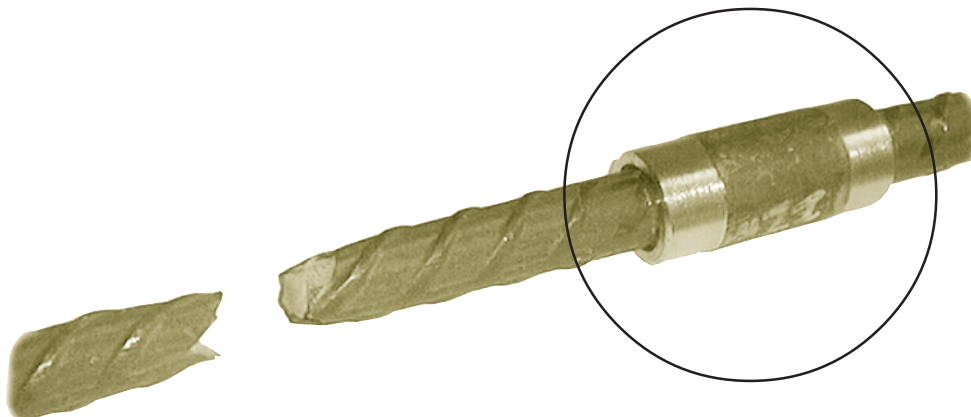
The patented BARON®-Splicing-System is a mechanical coupling system and enables the coupling of reinforcing rods. Screwed reinforcing rods have numerous, considerable advantages over lap joints.

The BARON®-Splicing-System can be used in accordance with BS8110, DIN1045, Swisscode SIA 162 as well as other standards not listed here.

- BARON®-BB couplers are stronger than the reinforcing rods used
- BARON®-BB couplers guarantee steel breakage under tensile loads.
- BARON®-BB couplers were developed for the coupling of reinforcing steel  $d=14$  mm to 40 mm.
- The BARON®-BB connection system is a product from ANCOTECH Ltd, an ISO 9001 – certified Swiss company.
- The BARON®-BB connection system is available in many different variations, like for example: Anchoring-Couplers, Transition Couplers, Welding Couplers etc.

BARON® couplers are delivered with COMBI nail plates or with plastic plugs as standard.

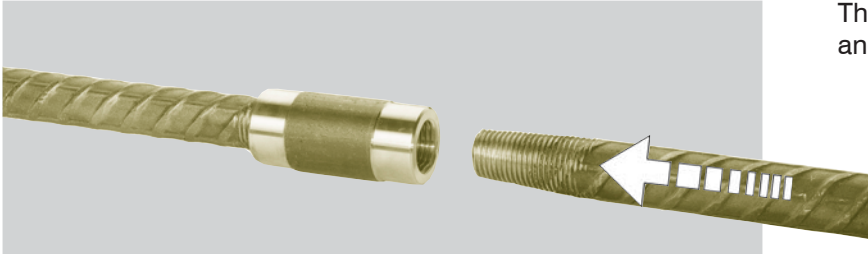
..... stronger than the  
reinforcing rods .....





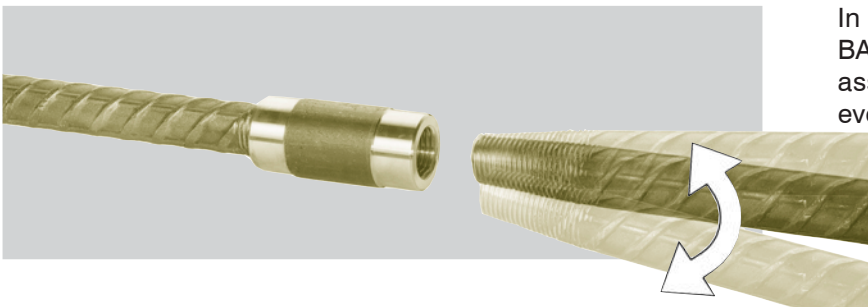
## Technical Advantages of the BARON® Splicing System

### Quick and simple assembly



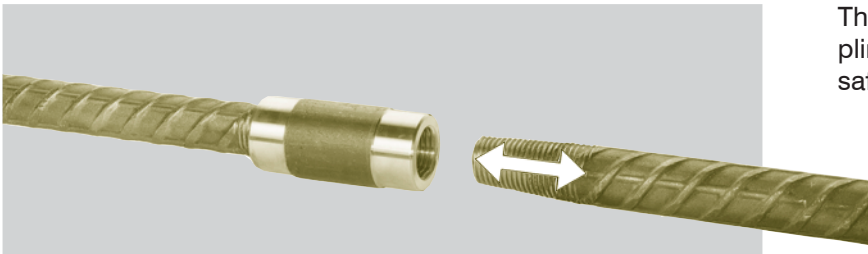
The flat conical BARON® thread enables quick and simple assembly to the connecting rods.

### Self-centring thread



In contrast to parallel threads the patented BARON® threads are self-centring. This is why assembly is simple, quick and trouble-free even for longer rods.

### High system safety



Thanks to the long thread the BARON® coupling system offers exceptionally high system safety.

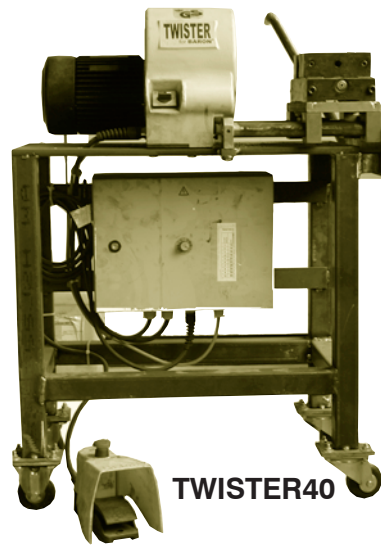
**We won't leave you alone with your coupling problems!**

**Production plants**

The BARON® threads are manufactured using the latest semi-hydraulic machines. The coupler assembly is performed mechanically in the manufacturing works.



BC30 / BC40



TWISTER40

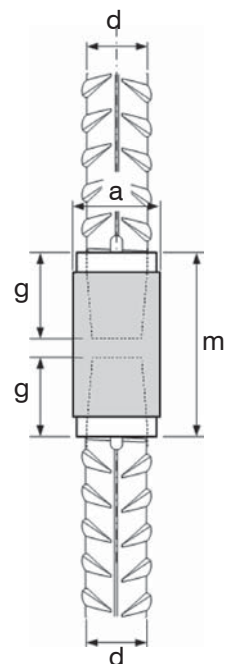
**BM**

**BARON® Standard Coupler**

The most common coupler used to connect two reinforcing rods of the same diameter together.

d (mm)	Code	m (mm)	a (mm)	g (mm)
14	bm14065	65	24	25.0
16	bm16070	70	25	28.0
18	bm18075	75	28	30.0
20	bm20080	80	30	32.0
22	bm22085	85	32	35.0
25	bm25090	90	36	37.5
26	bm26095	95	38	40.0
28	bm28100	100	40	42.5
30	bm30105	105	42	45.0
32	bm32115	115	46	50.0
34	bm34120	120	48	52.5
36	bm36125	125	50	55.0
40	bm40140	140	55	62.5
50	bm50170	170	70	65.0

Tab.BM



**We won't leave you alone with your coupling problems!**



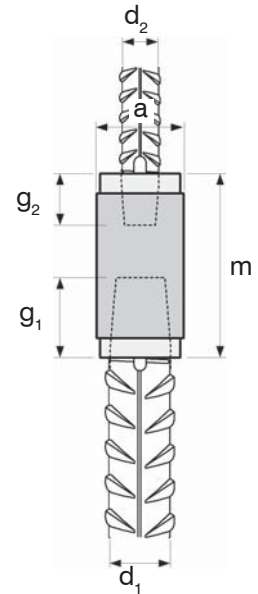
## BR

### BARON® Transition Coupler

The coupler for reinforcing rods with different diameters

d (mm)	Code	m (mm)	a (mm)	g <sub>1</sub> (mm)	g <sub>2</sub> (mm)
16/14	br1614070	70	25	35.0	32.5
18/16	br1816075	75	28	37.5	35.0
20/16	br2016080	80	30	40.0	35.0
20/18	br2018080	80	30	40.0	37.5
22/16	br2216085	85	32	42.5	35.0
22/20	br2220085	85	32	42.5	40.0
26/20	br2620095	95	38	47.5	40.0
26/22	br2622095	95	38	47.5	52.5
30/20	br3020105	105	42	52.5	40.0
30/22	br3022105	105	42	52.5	42.5
30/26	br3026105	105	42	52.5	47.5
34/26	br3426120	120	48	60.0	47.5
34/30	br3430120	120	48	60.0	52.5

Tab.BR



Other diameters are available on request.

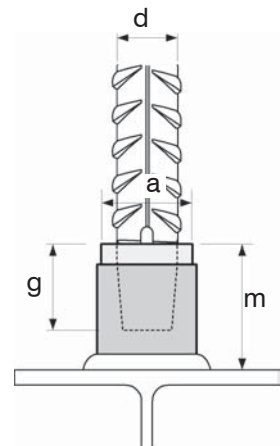
## BS

### BARON®-Welding Coupler

The welding coupler is used for the connection of reinforcing rods to steel constructions. It is specially made from weldable material.

d (mm)	Code	m (mm)	a (mm)	g (mm)
14	bs14065	55	32	25.0
16	bs16070	60	32	28.0
18	bs18075	60	32	30.0
20	bs20080	60	32	32.0
22	bs22085	65	32	35.0
26	bs26095	70	40	40.0
30	bs30105	75	46	45.0
34	bs34120	75	50	52.5
40	bs40140	90	55	62.5

Tab.BS



**We won't leave you alone with your coupling problems!**

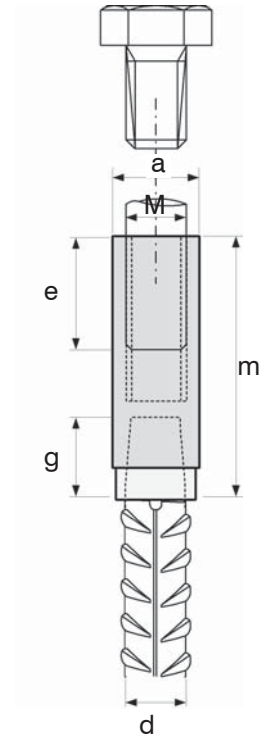
## BA

### BARON® Anchoring Coupler

BARON® anchoring coupler is used as a transition from reinforcing rods into a metric standard thread in accordance with DIN 13 (e.g. screws DIN 931/933).

d (mm)	Code	thread	m (mm)	a (mm)	g (mm)
14	ba14m12	M12	70	24	25.0
16	ba16m14	M14	75	25	28.0
18	ba18m16	M16	85	28	30.0
20	ba20m18	M18	90	30	32.0
22	ba22m20	M20	100	32	35.0
26	ba26m24	M24	115	38	40.0
30	ba30m27	M27	130	42	45.0

Tab.BA



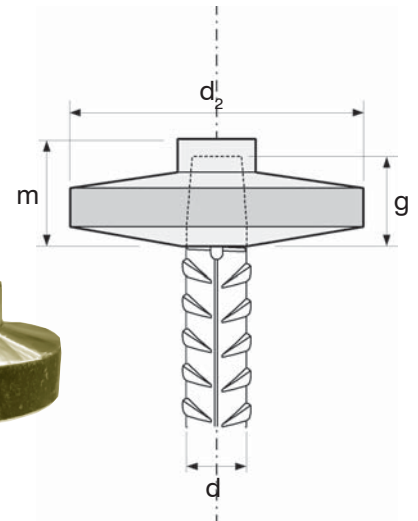
## BT

### BARON® Terminator

BARON® Terminators are used to anchor reinforcing rods. They supplement the ancoFIX® programme, which covers diameters from d=14mm to d=30mm.

d (mm)	Code	m (mm)	d <sub>2</sub> (mm)	g (mm)
30	bt30	52	100	37.0
34	bt34	60	110	45.0
40	bt40	70	130	55.0

Tab.BT



Other diameters are available on request.





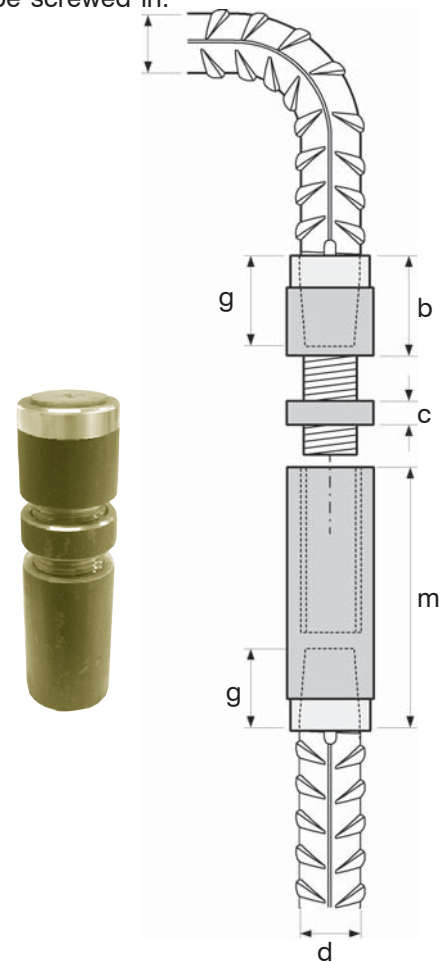
## BP

### BARON® Position Coupler

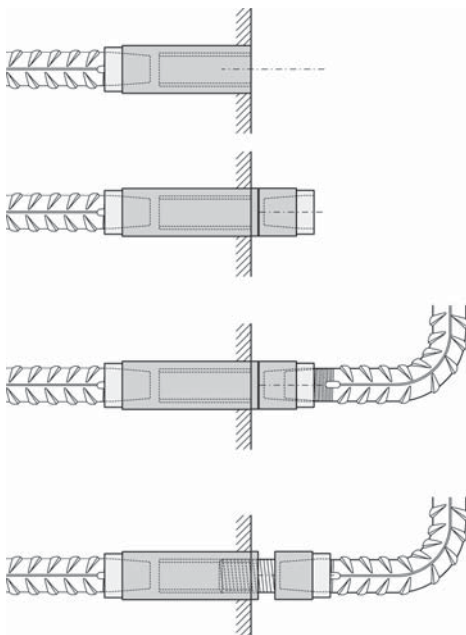
BARON® Position couplers are used when the connecting rod cannot be screwed in.

d (mm)	Code	m (mm)	b (mm)	c (mm)	a (mm)	g (mm)
14	bp14	55	30	13	32	25.0
16	bp16	60	30	13	32	28.0
18	bp18	65	35	13	36	30.0
20	bp20	70	40	13	40	32.0
22	bp22	75	40	13	42	35.0
25	bp25	80	45	13	46	37.5
26	bp26	85	45	13	46	40.0
28	bp28	90	50	13	50	42.5
30	bp30	95	50	13	55	45.0
32	bp32	105	55	13	60	50.0
34	bp34	110	60	13	65	52.5
36	bp36	115	60	13	65	55.0
40	bp40	130	65	15	70	62.5

Tab.BP



### Assembly instructions



The long part (A) is embedded in concrete.

Screw in parts (B) and (C).

Push the connection rod as far as possible into the Baron thread.

By unscrewing part (B), the connecting rod is screwed into part (B). Once screwed, the connection with part (C) must be fixed by a lock nut.



**COMBI Nail plates**

**BCT**

d (mm)	Code	Couler
14	bct14	red
16	bct16	yellow
18	bct18	lilac
20	bct20	gris
22	bct22	black
26	bct26	hellgrün
30	bct30	hellblau
34	bct34	orange

Tab.BCT

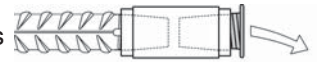
**Note:**

The COMBI nail plate is a positioning aid on the formwork shell. The BARON® reinforcing rod must be additionally fixed to the existing reinforcement.

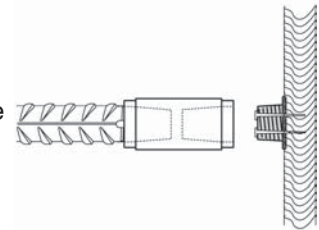


**Assembly instructions**

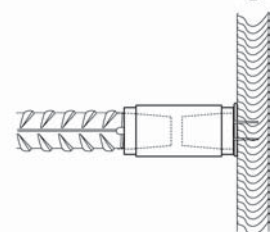
1. Unscrew COMBI nail plates from BARON® couplers



2. Nail COMBI nail plates to the formwork shell.



3. Screw BARON® couplers to the COMBI nail plates.



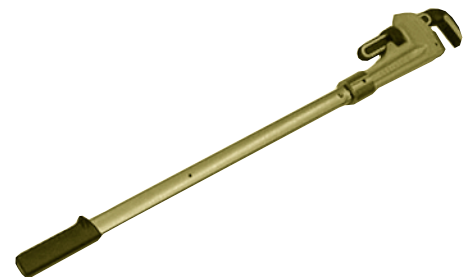
**Torque wrench**

**BDM**

As with all threads the BARON® thread also has slippage. In order to eliminate this the coupler must be tightened using a torque wrench. Thanks to the positive effect of the flat conical BARON® thread these are very small and easily summoned.

d	Couler	Drehmoment (Nm)	Code
14	red	60	BDM
16	yellow	80	
18	lilac	80	
20	gris	120	
22	black	140	
26	hellgrün	160	
30	hellblau	180	
34	orange	200	
40	brown	280	

Tab.BDM







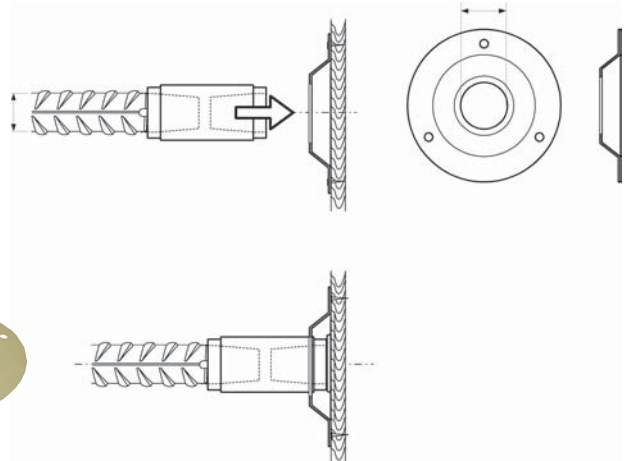
## BST

### Connector plate

The connector plate BST is nailed to the formwork shell as a side positioning aid. The coupler is then pushed into the connector plate.

d (mm)	Code	d <sub>2</sub> (mm)	h (mm)
14	bst14	25	10
16	bst16	26	10
18	bst18	29	10
20	bst20	30	10
22	bst22	33	10
26	bst26	40	10
30	bst30	43	10
34	bst34	50	10

Tab.BST



#### Note:

The screw plate BST is a positioning aid on the formwork shell. The BARON® reinforcing rod must be additionally fixed to the existing reinforcement.

## BNT

### Screw plate

The screw plate BNT is a positioning aid to fix the BARON® coupler to the formwork shell. The BNT screw plate is screwed to the coupler by means of the COMBI plate.

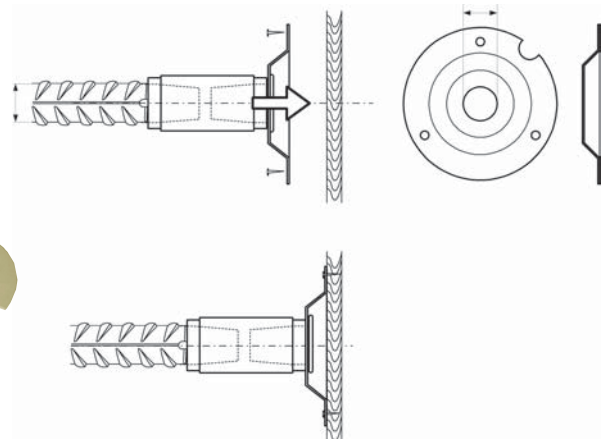
d (mm)	Code	d <sub>2</sub> (mm)	h (mm)
14	bnt14	14	10
16	bnt16	16	10
18	bnt18	18	10
20	bnt20	20	10
22	bnt22	22	10
25	bnt25	25	10
26	bnt26	26	10
28	bnt28	28	10
30	bnt30	30	10
34	bnt34	34	10

Tab.BNT



#### Note:

The screw plate BNT is a positioning aid on the formwork shell. The BARON® reinforcing rod must be additionally fixed to the existing reinforcement.





### Guaranteed quality

The BARON® Splicing System and BARON® BB-Splicing-System have been tested at several institutes. They are subject to strict, permanent controls of ANCOTECH Ltd. Switzerland.

**EMPA**  
 Eidgenössische Mess- und Forschungsanstalt  
 Laboratoire fédéral d'études des matériaux et de chimie  
 Swiss Federal Laboratories for Materials Testing and Research

**Prüfbericht**  
 Nr. 409'219

**Auftraggeber:** ANCOTECH AG  
 Ingenieurbüronehmung  
 Industriestrasse 3  
 CH-8157 Dielsdorf

**Prüfobjekt:** Zugversuche mit Dehnungsmessung nach SIA 1621, Prüfung Nr. 33 und Zugversuche mit Schlupfmessung nach DIN 1045 und DIN 4227/1

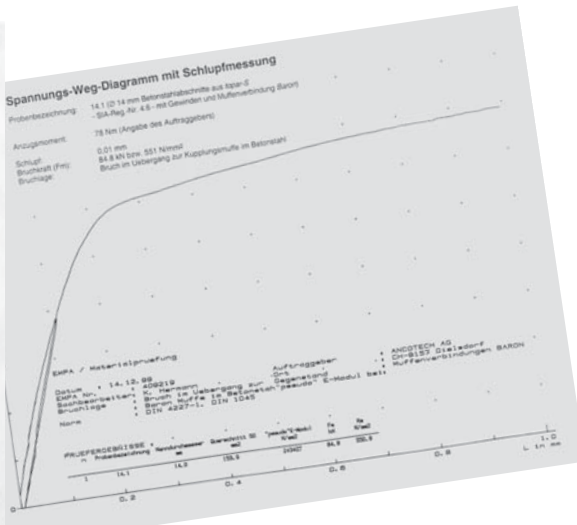
**Prüfmittel:** Je Durchmesser ein Identifikationszugversuch und je 3 Zugversuche mit Schlupfmessung an Betonstahlschrauben mit Mutterverbindung, Typ: Baron Betonstahlschraube nach SIA 5 5000; Durchmesser: 14, 20 und 28 mm

**Kundenreferenz:** Herrn Wastler  
 Ihr Auftrag vom: Dielsdorf vom 7. Dezember 1999  
 Eingang des Prüfobjekts: 7. Dezember 1999  
 Ausführung der Prüfung: 8. bis 21. Dezember 1999  
 Anzahl Seiten: 7  
 Belegart: 12 Spannungs-Weg-Diagramme  
 Merkblatt: Messunsicherheiten von Versuchsergebnissen

**Inhalt:**  
 1. Angaben über das geprüfte Produkt  
 2. Versuchsanfertigung  
 3. Zugversuche mit Dehnungsmessung (Identifikationsversuche)  
 4. Zugversuche mit Schlupfmessung  
 5. Zusammenfassung und Beurteilung

**Ausfertigung:** Das Protokoll wurde am 23.12.99 durch den Auftraggeber abgelehnt.  
 Vorstand: J. Hammerer als Auftraggeber  
 Dielsdorf, 21. Dezember 1999  
 Der Prüfer: K. Hammerer  
 Festigkeit und Technologie  
 Der Abteilungsleiter  
 Dr. R. Kneiblauch

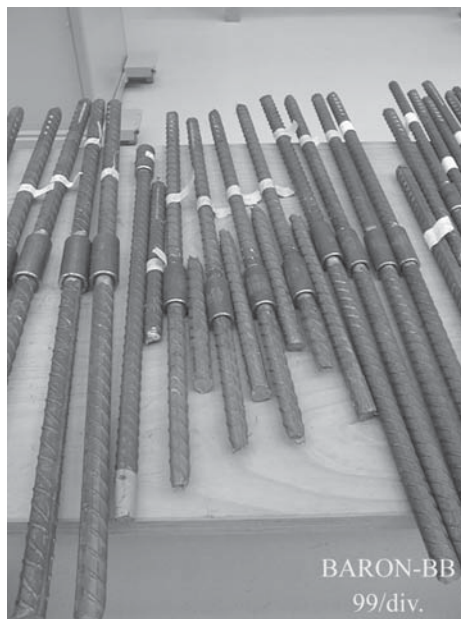
**STB Nr. 301**



This is a mark of guaranteed Bar Break safety. It is constantly checked. We guarantee the permanent and constantly high quality of our products.



BARON-BB 98/S'pore



BARON-BB 99/div.



BARON-BB V 99/23

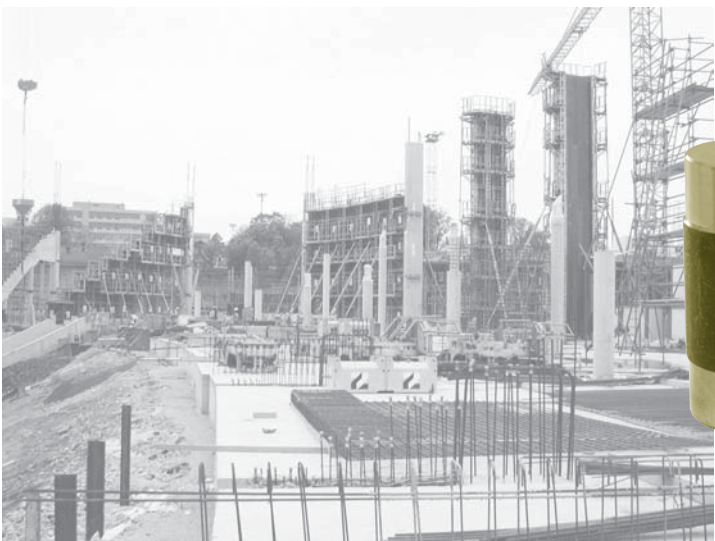
Perfect results come from perfect products.



The BARON® Splicing-System enables stage-by-stage construction.

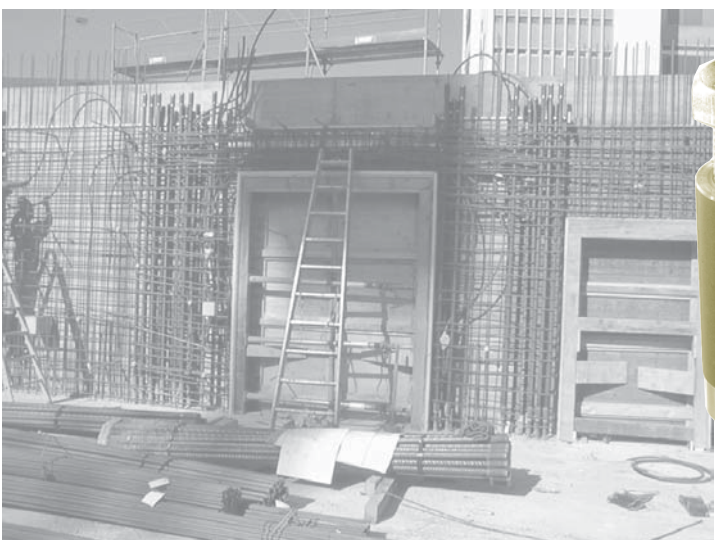
In addition the use of lap joints can almost be avoided completely when using the BARON® connections.

**BARON® Standard Coupler**



Thanks to an extensive product range BARON® couplers can also be used to solve complicated connecting problems simply and economically.

**BARON® Transition Coupler**



Even anchoring problems with threaded connections (DIN 13) are solved simply and safely with the BARON® anchoring coupler.

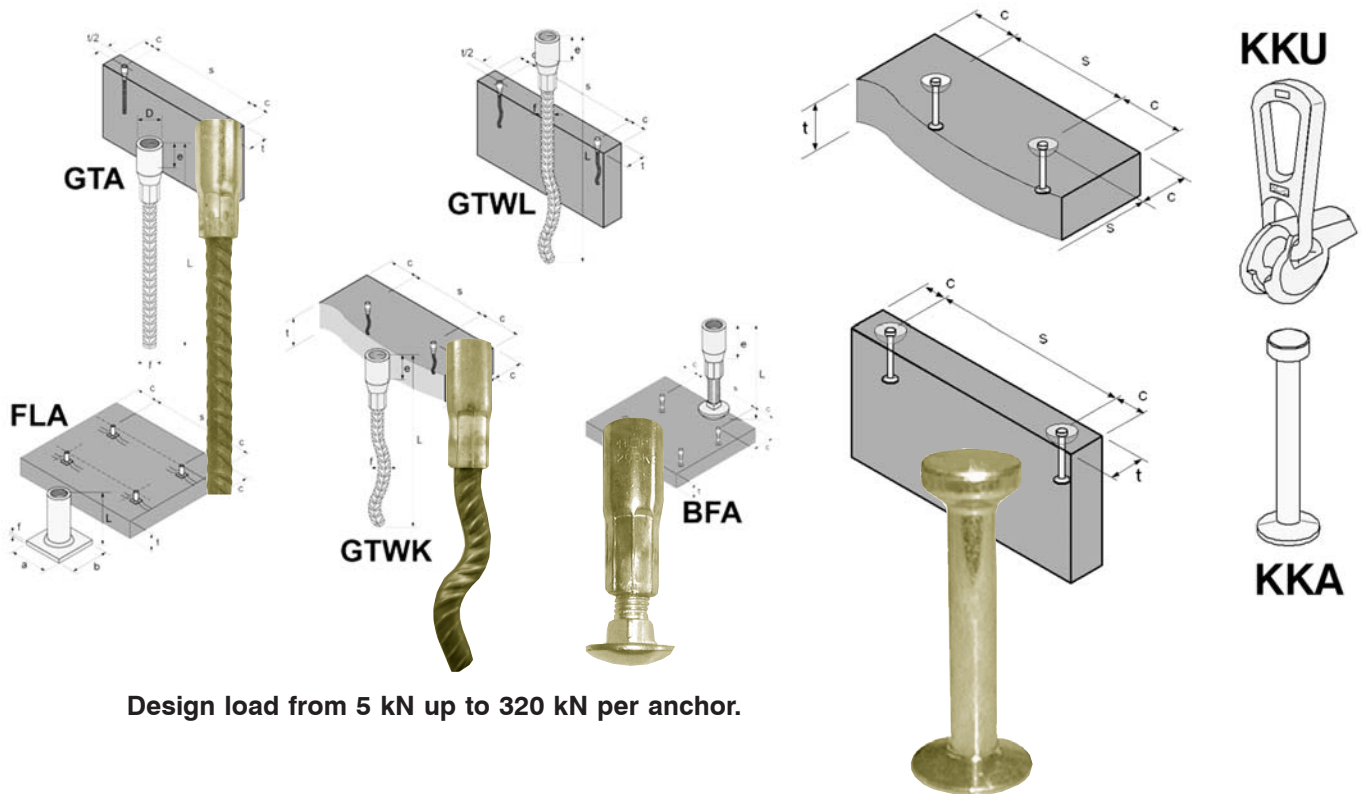
The detailed constructions are calculated clearly and simply with the anchoring coupler.

**BARON®-Anchoring Coupler**



## Lifting System for Precast Concrete

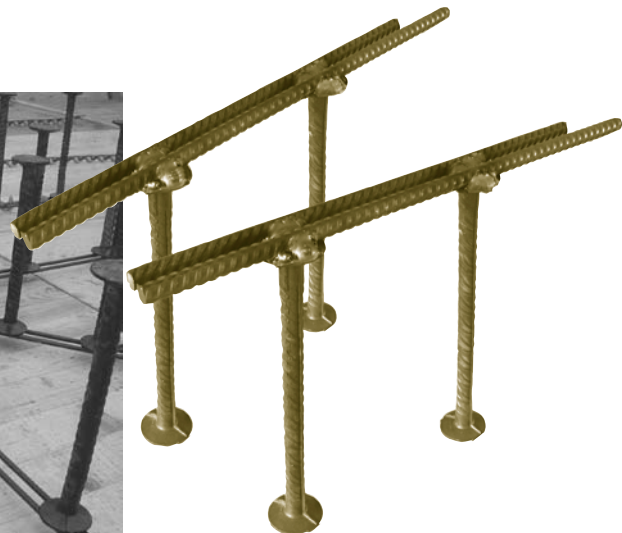
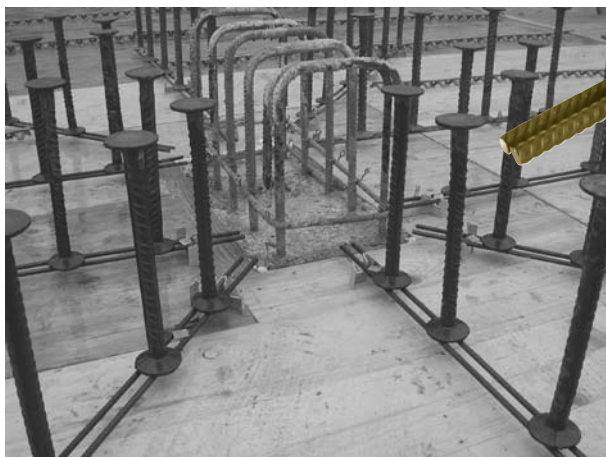
Because of their own fabrication, ANCOTECH Ltd. is one of the most qualified supplier of lifting systems for precast concrete. (p.ex. Spherical head anchors KKA)



Design load from 5 kN up to 320 kN per anchor.

## ancoPLUS® Shear Reinforcement

As the manufacturer ANCOTECH Ltd. have over 15 years of experience in the area of shear reinforcements. Through the use of calculating software (in accordance with approval DIN1045 or Swisscode SIA162 respectively) the shear reinforcements can be calculated quickly and simply.



9.2002/15'000

**ancotech**

Headquarter and Fabrication:  
**ANCOTECH Ltd**  
 Special Reinforcement-Stainless Steel  
 Industriestrasse 3  
**CH-8157 Dielsdorf**

Tel: 01/854 72 22  
 Fax: 01/854 72 29  
 E-Mail: info@ancotech.ch

Germany:  
**ANCOTECH GmbH**  
 Special Reinforcement-Stainless Steel  
 Eupener Strasse 135-137  
**D-50933 Köln**

Tel: +49 221 500 81 74  
 Fax: +49 221 500 81 79  
 E-Mail: info@ancotech.de

**sia**  
 SIA 161/1 - S2  
 Betriebsanweisung  
 SIA 161/S2

SWISS  
 CERTIFICATION  
 ISO 9001