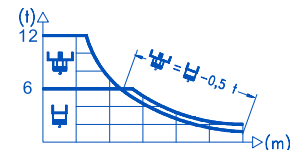
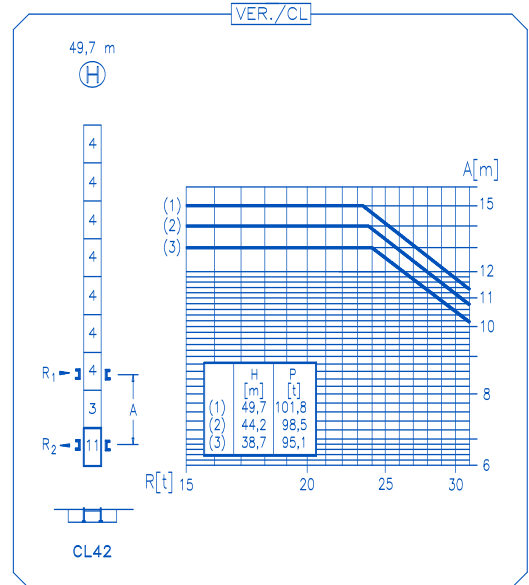
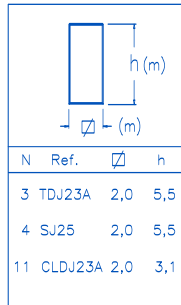
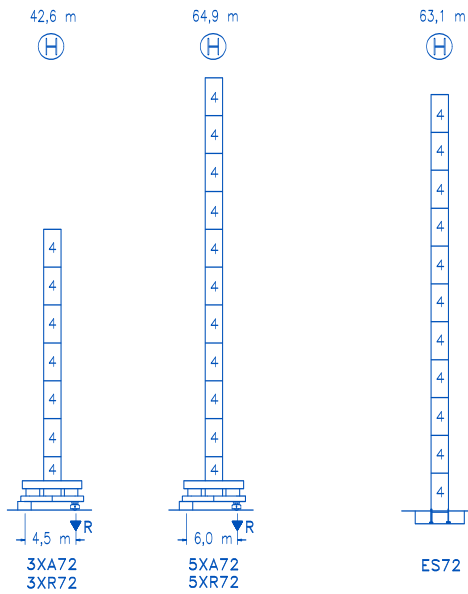


CE
DIN 15018 H1 B3

R														
74	20,2	25	30	35,9	37,3	40	44	50	54	60	64	70	74	m
	12000	9345	7500	6000	6000	5545	4980	4300	3930	3475	3220	2890	2700	kg
70	20,7	25	30	36,8	38,5	40	44	50	54	60	64	70		m
	12000	9610	7720	6000	6000	5745	5155	4455	4075	3605	3340	3000		kg
64	22,3	25	30	34	39,6	41,9	44	50	54	60	64			m
	12000	10470	8430	7245	6000	6000	5685	4920	4505	3990	3700			kg
60	22,1	25	30	34	39,4	42,0	44	50	54	60				m
	12000	10390	8370	7195	6000	6000	5695	4930	4515	4000				kg
54	22,3	25	30	34	39,8	42,7	44	50	54					m
	12000	10500	8460	7275	6000	6000	5800	5020	4600					kg
50	23,2	25	30	34	40	41,4	44,8	50						m
	12000	11005	8880	7645	6000	6000	6000	5300						kg
44	25,9	30	34	37	40	44								m
	12000	10100	8715	7880	7170	6500								kg
40	26,4	30	34	37	40									m
	12000	10345	8930	8075	7500									kg





R. max. In operation
最大反力 工作状态

3XR72 105,9 t
5XR72 113,6 t

R. max. Out of service
最大反力 非工作状态

3XR72 90,3 t
5XR72 150,3 t

TFU-7.5
7,5 kW

0 ⇄ 94 m/min

SWR-12
3 x 120 Nm

0 ⇄ 0,7 rpm

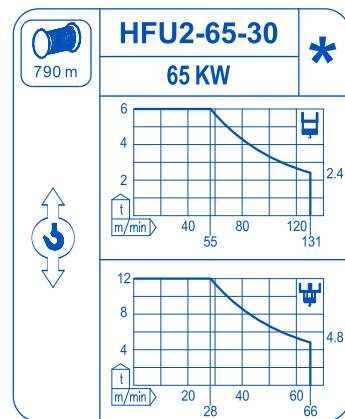
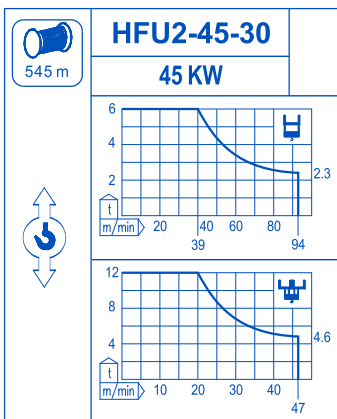
RT-7.5
2 x 75 Nm

0 ⇄ 20 m/min

RT-7.5VC
2 x 75 Nm

0 ⇄ 20 m/min

5XR72



Operating voltage
工作电压

380 V
3 ph
50 Hz

Optional
选项



杭州科曼萨杰牌建设机械有限公司
电话 / Tel : +86-571-8299 9999
传真 / Fax : +86-571-8299 6555
www.comansajie.com.cn
sales@comansajie.com.cn
杭州市萧山靖江工业园区
Jingjiang, Xiaoshan, Hangzhou, china 311223

CJ-DS-200810-003 **21 CJ 290 12 t**