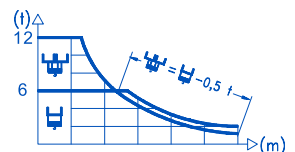
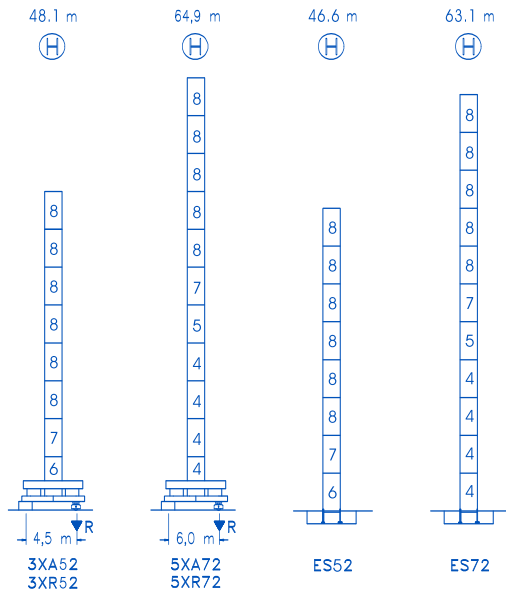


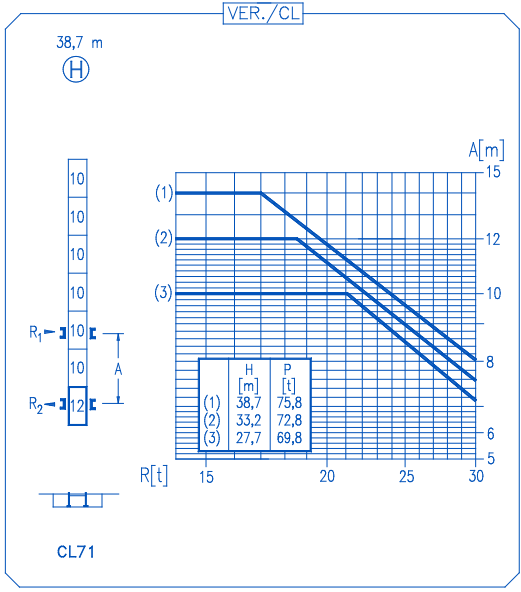
CE
DIN 15018 H1 B3

R													
	16,5	20	25	29,2	30,3	34	40	44	50	54	60	64	m
64	12000	9560	7290	6000	6000	5270	4375	3920	3370	3075	2705	2500	kg
	16,8	20	25	29,8	31,2	34	40	44	50	54	60	64	m
60	12000	9785	7470	6000	6000	5440	4520	4045	3485	3180	2800	2500	kg
	16,8	20	25	29,7	31,3	34	40	44	50	54	60	64	m
54	12000	9750	7440	6000	6000	5475	4545	4070	3505	3200	2800	2500	kg
	18,5	20	25	30	32,8	35,0	40	44	50	54	60	64	m
50	12000	10940	8385	6710	6000	6000	5165	4635	4000	3500	3000	2500	kg
	19,2	20	25	30	34,1	36,8	40	44	50	54	60	64	m
44	12000	11430	8770	7030	6000	6000	5460	4900	4400	3900	3400	2900	kg
	19,2	20	25	30	34,1	37,0	40	44	50	54	60	64	m
40	12000	11440	8780	7035	6000	6000	5500	5000	4500	4000	3500	3000	kg
	19,0	20	25	27	30	34	40	44	50	54	60	64	m
34	12000	11315	8680	7910	6955	6100	5500	5000	4500	4000	3500	3000	kg
	18,9	20	25	27	30	34	40	44	50	54	60	64	m
30	12000	11245	8625	7860	7100	6100	5500	5000	4500	4000	3500	3000	kg
	18,9	20	25	27	30	34	40	44	50	54	60	64	m





N	Ref.	h (m)
4	SJ25	2.0 5.5
5	TSJ25	2.0 5.5
6	SJ24	2.0 5.5
7	TSJ24	2.0 5.5
8	SJ23	2.0 5.5
10	SJ15	1.6 5.5
12	CLSJ15	1.6 3.1



R. max. In operation
最大反力 工作状态

3XR52 90,1 t
5XR72 95,7 t

R. max. Out of service
最大反力 非工作状态

3XR52 94,4 t
5XR72 134,0 t

TFU-7.5
7,5 kW

0 ⇄ 94 m/min

SWR-12
2 x 120 Nm

0 ⇄ 0,7 rpm

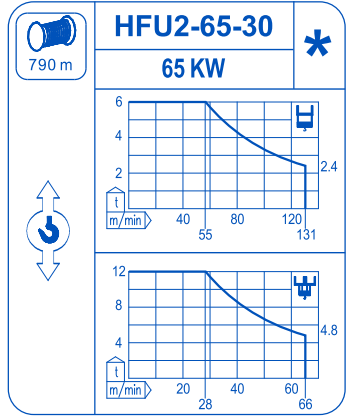
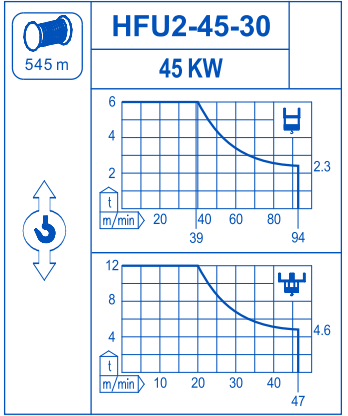
RT-7.5
2 x 75 Nm

0 ⇄ 20 m/min

RT-7.5VC
2 x 75 Nm

0 ⇄ 20 m/min

5XR72



Operating voltage
工作电压

380 V
3 ph
50 Hz

Optional
选项



杭州科曼萨杰牌建设机械有限公司
电话 / Tel : +86-571-8299 9999
传真 / Fax : +86-571-8299 6555
www.comansajie.com.cn
sales@comansajie.com.cn
杭州市萧山靖江工业园区
Jingjiang,Xiaoshan, Hangzhou, china 311223

CJ-DS-200810-001 **21 CJ 210 121**