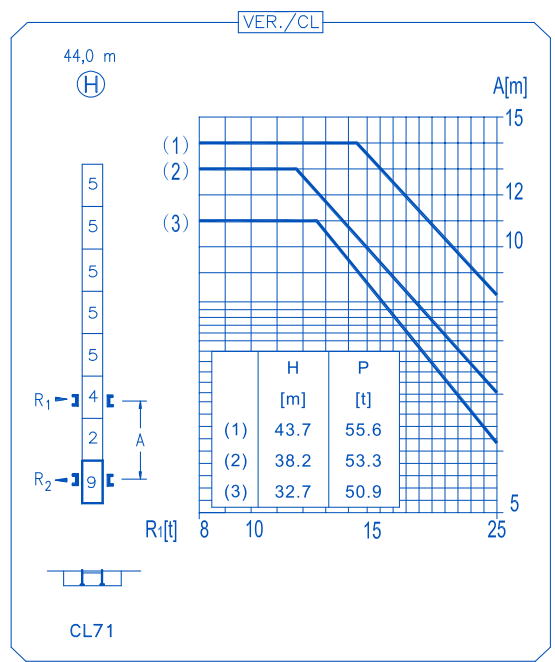
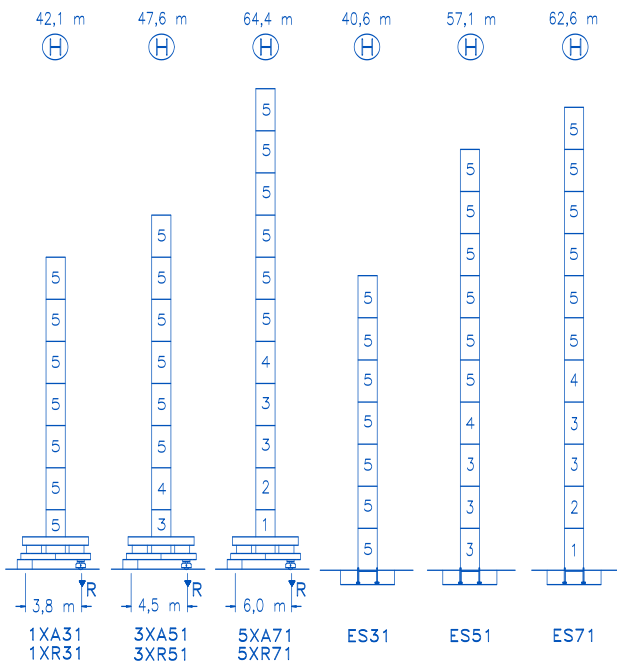


R		R _(Cmax)	C _{max}	25	30	34	40	44	50	55	60	
60		33,1 m 17,5 m	4000 8000	4000 5365	4000 4350	3885 3775	3230 3095	2895 2750	2490 2345	2225 2075	2000 1850	
55		33,5 m 17,7 m	4000 8000	4000 5420	4000 4395	3930 3795	3270 3125	2930 2785	2520 2375	2250 2100		
50		33,2 m 17,5 m	4000 8000	4000 5375	4000 4355	3900 3765	3240 3100	2905 2760	2500 2350			
44		35,6 m 18,8 m	4000 8000	4000 5805	4000 4715	4000 4080	3515 3365	3150 3000				
40		36,0 m 18,9 m	4000 8000	4000 5860	4000 4760	4000 4120	3550 3400					
34		34,0 m 19,2 m	4000 8000	4000 5970	4000 4850	4000 4200						
30		30,0 m 19,2 m	4000 8000	4000 5970	4000 4850							



R. max. In operation 最大反力 工作状态	1XR31	74,0 t
	3XR51	71,9 t
	5XR71	82,4 t

R. max. Out of service 最大反力 非工作状态	1XR31	81,7 t
	3XR51	89,4 t
	5XR71	125,4 t

TFU-4.0

4 kW

0 ⇄ 66 m/min

SWR-7.5

2 x 75 Nm

0 ⇄ 0,7 rpm

TS2-5.5 | **RT-7.5**

2 x 55 Nm | 2 x 75 Nm

0 ⇄ 20 m/min

1XR31 | 5XR 71

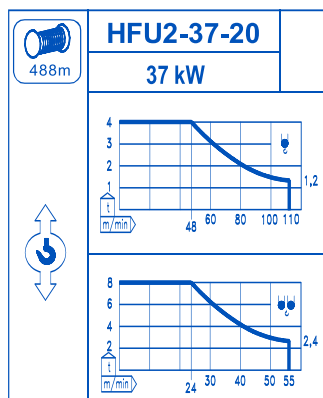
3XR51

RT-7.5VC

2 x 75 Nm

0 ⇄ 20 m/min

5XR71



Operating voltage 工作电压	380 V 3 ph 50 Hz
---------------------------	---

Optional 选项	*
----------------	----------